




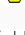



52

Normally closed direct acting solenoid valve suitable for non aggressive gases and fluids.
When energized the solenoid lifts the sealing element from the valve seat and opens the valve.
The valve works without a pressure difference. The valve is closed by spring power.

Technical Features

Pressure range:	0-90 bar (se table)
Connection:	Female thread acc. to DIN ISO 228
Standard voltages:	24, 110, 230V/50-60Hz ±10% 12, 24, 110VDC ±10%
Temperature range:	-10...+80°C at 35°C ambient temperature
Viscosity:	Max 22 mm ² /s
Body:	Stainless steel 1.4571 (AISI316Ti)
Metallic internals:	Brass and stainless steel 1.4104 (AISI430F)
Seat:	FKM
Installation:	Actuator in any position
Duty factor:	100% ED-VDE0580
Protection class:	IP65 acc. to DIN EN 60529 ATEX II 2G EEx m II T4 / II 2D IP65 T130°C (Valid for models marked  below)

Type	G	Seat mm	Kv m ³ /h	Pressure range bar	Power AC	Power DC
5242/0802/.032-..V/..Hz	1/4"	2,0	0,13	0-40	18/19VA	11W
5242/0802/.012-..V/..Hz	1/4"	2,0	0,13	0-90	24VA	18,5W
5244/0802/.032-..V/..Hz	1/4"	3,0	0,20	0-15	18/19VA	11W
5244/0802/.012-..V/..Hz	1/4"	3,0	0,20	0-30	24VA	18,5W
5245/0802/.032-..V/..Hz	1/4"	4,0	0,35	0-8	18/19VA	11W
5245/0802/.012-..V/..Hz	1/4"	4,0	0,35	0-16	24VA	18,5W
5246/0802/.032-..V/..Hz	1/4"	5,0	0,50	0-5	18/19VA	11W
5246/0802/.012-..V/..Hz	1/4"	5,0	0,50	0-10	24VA	18,5W
5232/0802/.178-..V/..Hz 	1/8"	2,0	0,13	0-10	5,3VA	5,2W
5242/0802/.178-..V/..Hz 	1/4"	2,0	0,13	0-10	5,3VA	5,2W
5242/0802/.148-..V/..Hz 	1/4"	2,0	0,13	0-55	8,5VA	10W
5244/0802/.148-..V/..Hz 	1/4"	3,0	0,20	0-20	8,5VA	10W
5245/0802/.148-..V/..Hz 	1/4"	4,0	0,35	0-10	8,5VA	10W
5246/0802/.148-..V/..Hz 	1/4"	5,0	0,50	0-6	8,5VA	10W
5232/0802/.012-NO-..V/..Hz *)	1/8"	2,0	0,13	0-22	24VA	18,5W
5242/0802/.012-NO-..V/..Hz *)	1/4"	2,0	0,13	0-22	24VA	18,5W
5244/0802/.012-NO-..V/..Hz *)	1/4"	3,0	0,20	0-10	24VA	18,5W
5245/0802/.012-NO-..V/..Hz *)	1/4"	4,0	0,35	0-5	24VA	18,5W

*) NO - Normally open execution

Options

Seat in EPDM, PTFE or PEEK

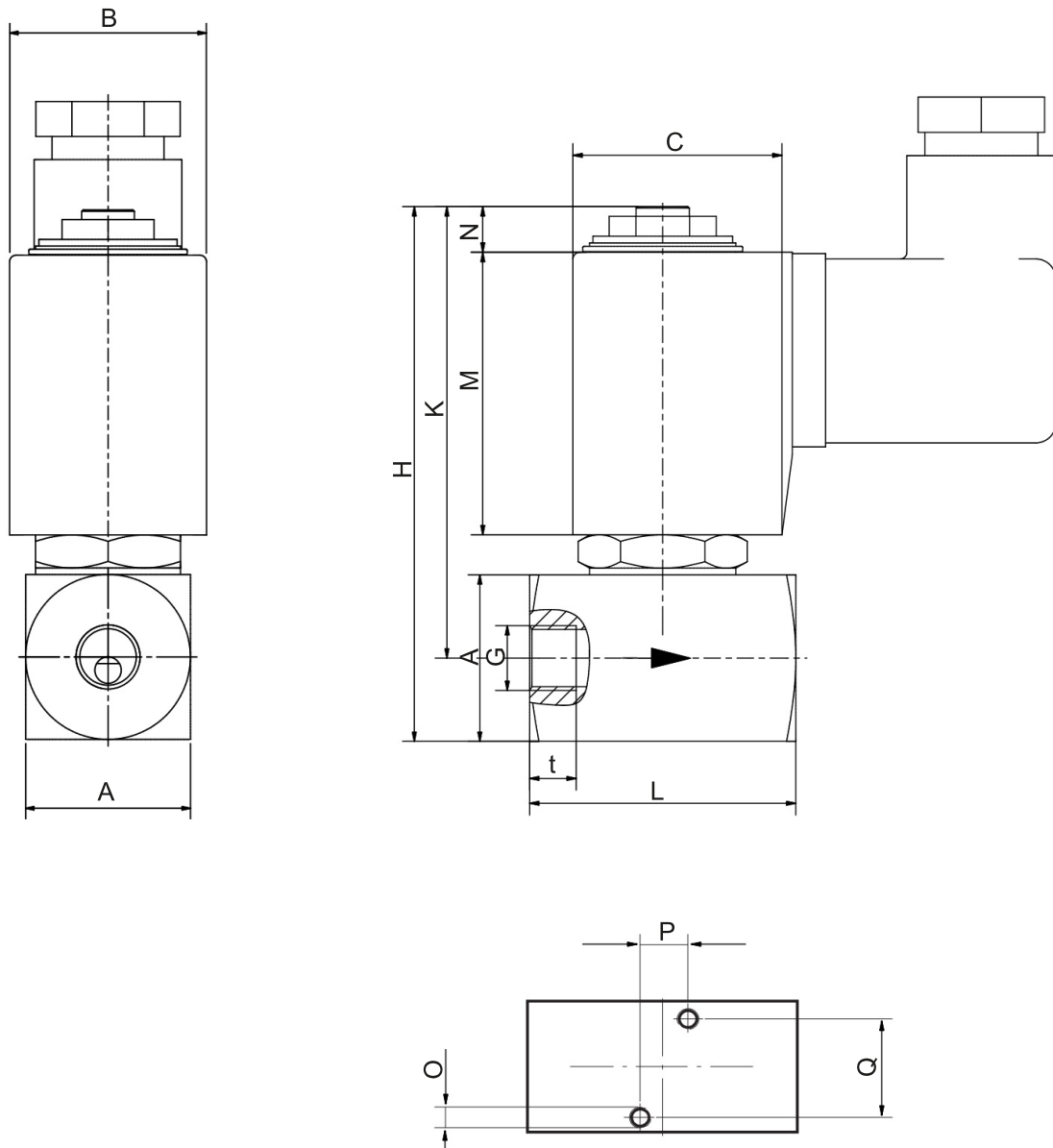
Manual operation

High temperature execution for media temperature up to +130°C

High pressure execution for media pressure up to 450bar

SOLENOID VALVES

2/2 Direct Acting



Dimensions, mm

Type	G	A	B	C	H	K	L	M	N	O	P	Q	t	Kg
5242/0802/.032-..V/..Hz	1/4"	25	30	39	80	67,5	40	40	10	M6	15,5	15,5	15,5	0,60
5242/0802/.012-..V/..Hz	1/4"	25	36	45	80	67,5	40	40	10	M6	15,5	15,5	15,5	0,60
5244/0802/.032-..V/..Hz	1/4"	25	30	39	80	67,5	40	40	10	M6	15,5	15,5	15,5	0,60
5244/0802/.012-..V/..Hz	1/4"	25	36	45	80	67,5	40	40	10	M6	15,5	15,5	15,5	0,60
5245/0802/.032-..V/..Hz	1/4"	25	30	39	80	67,5	40	40	10	M6	15,5	15,5	15,5	0,60
5245/0802/.012-..V/..Hz	1/4"	25	36	45	80	67,5	40	40	10	M6	15,5	15,5	15,5	0,60
5246/0802/.032-..V/..Hz	1/4"	25	30	39	80	67,5	40	40	10	M6	15,5	15,5	15,5	0,60
5246/0802/.012-..V/..Hz	1/4"	25	36	45	80	67,5	40	40	10	M6	15,5	15,5	15,5	0,60