

SOLENOID VALVES

3/2 Direct Acting




72

Normally closed direct acting solenoid valve suitable for non aggressive gases and fluids.









In rest position P is closed towards A, and A is open towards R.

When energized the solenoid lifts the sealing element from the valve seat and opens P towards A and closes A towards R.

Technical Features

Pressure range:	0-90 bar (see table)
Connection:	Port P-A, female thread acc. to DIN ISO 228. Port R, male thread G1/8" with coil .032/012 Port R, female thread M5 with coil .182
Standard voltages:	24, 110, 230V/50-60Hz ±10% 12, 24, 110VDC ±10%
Temperature range:	-10...+80°C at 35°C ambient temperature
Viscosity:	Max 22 mm ² /s
Body:	Brass
Metallic internals:	Brass and stainless steel 1.4104 (AISI430F)
Seat:	FKM
Installation:	Actuator in any position
Duty factor:	100% ED-VDE0580
Protection class:	IP65 acc. to DIN EN 60529 ATEX II 2G EEx m II T4 / II 2D IP65 T130°C (Valid for models marked  below)



Type	G	Seat mm	Kv m ³ /h	Pressure range bar	Power AC	Power DC
7231/1002/.182-..V/..Hz	1/8"	1,5	0,09	0-8	10,5/11VA	6,8W
7232/1002/.182-..V/..Hz	1/8"	2,0	0,13	0-6	10,5/11VA	6,8W
7232/1002/.032-..V/..Hz	1/8"	2,0	0,13	0-11	18/19VA	11W
7234/1002/.032-..V/..Hz	1/8"	3,0*	0,20	0-6	18/19VA	11W
7240/1002/.182-..V/..Hz	1/4"	1,0	0,06	0-10	10,5/11VA	6,8W
7240/1002/.032-..V/..Hz	1/4"	1,0	0,06	0-25	18/19VA	11W
7241/1002/.182-..V/..Hz	1/4"	1,5	0,09	0-8	10,5/11VA	6,8W
7241/1002/.032-..V/..Hz	1/4"	1,5	0,09	0-11	18/19VA	11W
7242/1002/.182-..V/..Hz	1/4"	2,0	0,13	0-6	10,5/11VA	6,8W
7242/1002/.032-..V/..Hz	1/4"	2,0	0,13	0-11	18/19VA	11W
7242/1002/.012-..V/..Hz	1/4"	2,0	0,13	0-22	24VA	18,5W
7243/1002/.032-..V/..Hz	1/4"	2,5	0,16	0-8	18/19VA	11W
7243/1002/.012-..V/..Hz	1/4"	2,5	0,16	0-15	24VA	18,5W
7244/1002/.032-..V/..Hz	1/4"	3,0*	0,20	0-6	18/19VA	11W
7244/1002/.012-..V/..Hz	1/4"	3,0*	0,20	0-10	24VA	18,5W
7231/1002/.148-..V/..Hz 	1/8"	1,5	0,09	0-10	8,5VA	10W
7232/1002/.148-..V/..Hz 	1/8"	2,0	0,13	0-8	8,5VA	10W
7234/1002/.148-..V/..Hz 	1/8"	3,0*	0,20	0-3	8,5VA	10W
7240/1002/.148-..V/..Hz 	1/4"	1,0	0,06	0-20	8,5VA	10W
7241/1002/.148-..V/..Hz 	1/4"	1,5	0,09	0-10	8,5VA	10W
7242/1002/.148-..V/..Hz 	1/4"	2,0	0,13	0-8	8,5VA	10W
7243/1002/.148-..V/..Hz 	1/4"	2,5	0,16	0-6	8,5VA	10W
7244/1002/.148-..V/..Hz 	1/4"	3,0*	0,20	0-3	8,5VA	10W

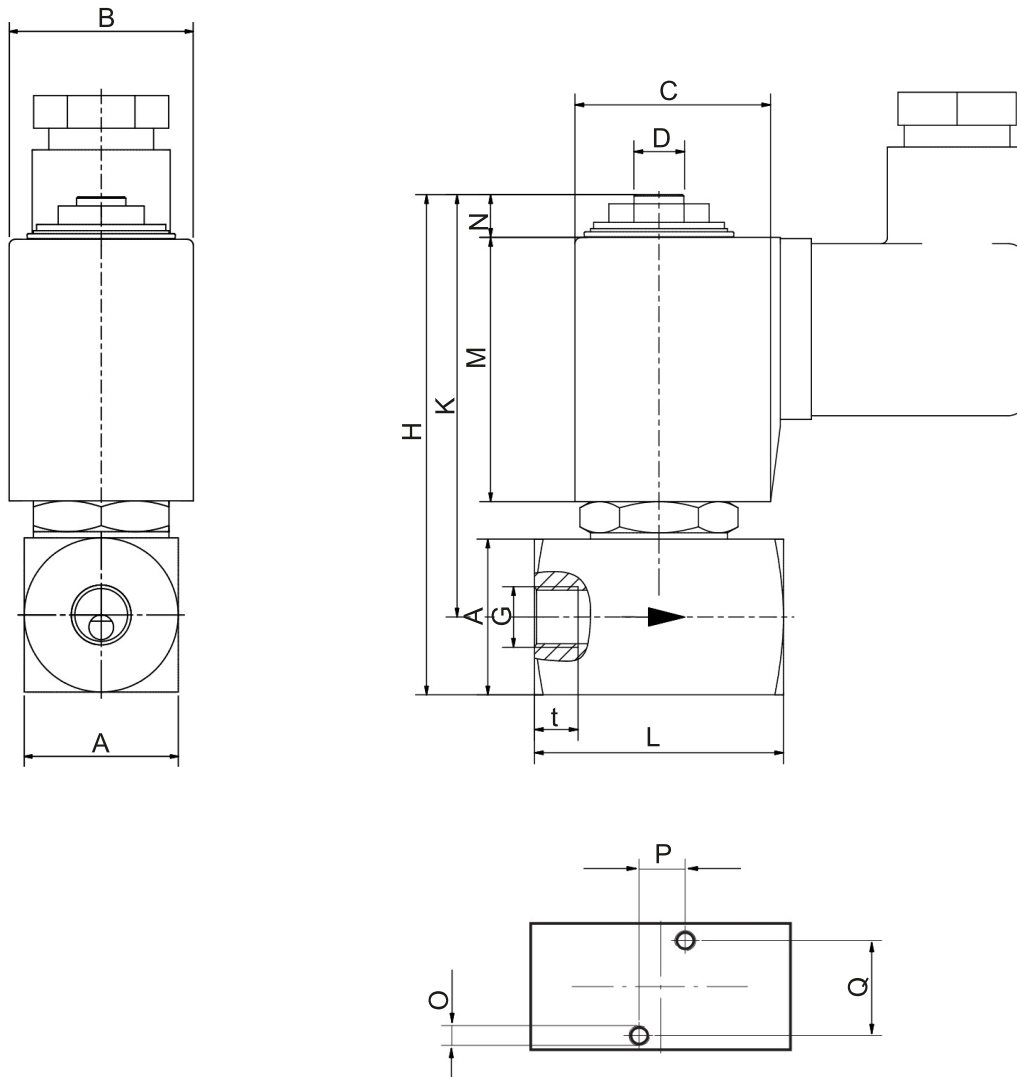
*) Exhaust port (A) - Ø2,5mm.

Options

- Body in stainless steel AISI304
- Seat in EPDM
- Normally open execution, NO
- Manual operation

SOLENOID VALVES

3/2- Direct Acting



Dimensions, mm

Type	G	A	B	C	D	H	K	L	M	N	O	P	Q	t	Kg
7231/1002/.182-..V/..Hz	1/8"	15	30	35	M5	55	47,5	32	30	5	-	-	-	-	0,30
7232/1002/.182-..V/..Hz	1/8"	15	30	35	M5	55	47,5	32	30	5	-	-	-	-	0,30
7232/1002/.032-..V/..Hz	1/8"	25	30	39	1/8"	80	67,5	40	40	10	M6	15,5	15,5	15,5	0,55
7234/1002/.032-..V/..Hz	1/8"	25	30	39	1/8"	80	67,5	40	40	10	M6	15,5	15,5	15,5	0,55
7240/1002/.182-..V/..Hz	1/4"	20	30	35	M5	60	52,5	40	30	5	-	-	-	-	0,35
7240/1002/.032-..V/..Hz	1/4"	25	30	39	1/8"	80	67,5	40	40	10	M6	15,5	15,5	15,5	0,60
7241/1002/.182-..V/..Hz	1/4"	20	30	35	M5	60	52,5	40	30	5	-	-	-	-	0,35
7241/1002/.032-..V/..Hz	1/4"	25	30	39	1/8"	80	67,5	40	40	10	M6	15,5	15,5	15,5	0,60
7242/1002/.182-..V/..Hz	1/4"	20	30	35	M5	60	52,5	40	30	5	-	-	-	-	0,35
7242/1002/.032-..V/..Hz	1/4"	25	30	39	1/8"	80	67,5	40	40	10	M6	15,5	15,5	15,5	0,60
7242/1002/.012-..V/..Hz	1/4"	25	36	45	1/8"	80	67,5	40	40	10	M6	15,5	15,5	15,5	0,60
7243/1002/.032-..V/..Hz	1/4"	25	30	39	1/8"	80	67,5	40	40	10	M6	15,5	15,5	15,5	0,60
7243/1002/.012-..V/..Hz	1/4"	25	36	45	1/8"	80	67,5	40	40	10	M6	15,5	15,5	15,5	0,60
7244/1002/.032-..V/..Hz	1/4"	25	30	39	1/8"	80	67,5	40	40	10	M6	15,5	15,5	15,5	0,60
7244/1002/.012-..V/..Hz	1/4"	25	36	45	1/8"	80	67,5	40	40	10	M6	15,5	15,5	15,5	0,60
7231/1002/.148-..V/..Hz	1/8"	25	36	45	1/8"	80	67,5	40	40	10	M6	15,5	15,5	15,5	0,60
7232/1002/.148-..V/..Hz	1/8"	25	36	45	1/8"	80	67,5	40	40	10	M6	15,5	15,5	15,5	0,60
7234/1002/.148-..V/..Hz	1/8"	25	36	45	1/8"	80	67,5	40	40	10	M6	15,5	15,5	15,5	0,60
7240/1002/.148-..V/..Hz	1/4"	25	36	45	1/8"	80	67,5	40	40	10	M6	15,5	15,5	15,5	0,60
7241/1002/.148-..V/..Hz	1/4"	25	36	45	1/8"	80	67,5	40	40	10	M6	15,5	15,5	15,5	0,60
7242/1002/.148-..V/..Hz	1/4"	25	36	45	1/8"	80	67,5	40	40	10	M6	15,5	15,5	15,5	0,60
7243/1002/.148-..V/..Hz	1/4"	25	36	45	1/8"	80	67,5	40	40	10	M6	15,5	15,5	15,5	0,60
7244/1002/.148-..V/..Hz	1/4"	25	36	45	1/8"	80	67,5	40	40	10	M6	15,5	15,5	15,5	0,60