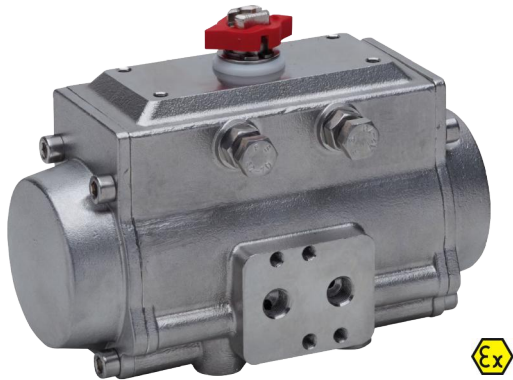


PNEUMATIC ACTUATORS

Stainless steel double acting actuator, 0-90°



84DA

Actuator for the automation of ball valves and butterfly valves.

Mounting pattern according to ISO5211.

Double acting: Air open the valve. Air close the valve.

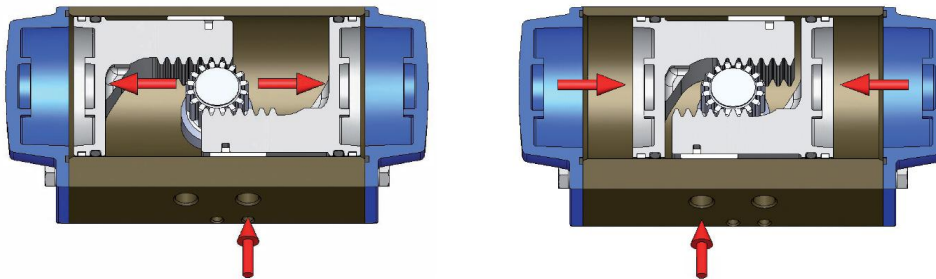
Solenoid and switchbox connection according to Namur norm.

The actuator is certified SIL3.

Technical Specification

Air supply pressure:	2,5 - 8 bar
Temperature range:	-20...+85°C
Stroke adjustment:	Open and closed position $\pm 5^\circ$
Body:	Stainless steel A351-CF8M
End caps:	Stainless steel A351-CF8M
Pinion:	Stainless steel AISI 316
Screws and nuts:	Stainless steel A2
Pistons:	Aluminium
Seals:	NBR and POM
ATEX:	II 2 G/D c T6

Operating Principle



Torque (Nm)

Supply pressure (bar)	2,5	3,0	4,0	5,0	5,5	6,0	7,0	8,0
Type	9,0	11,0	14,5	18,5	20,0	22,0	26,0	30,0
84DA052	15,5	19,0	26,0	33,0	36,0	39,5	46,5	53,5
84DA063	29,0	35,0	47,5	60,0	66,0	72,0	84,5	97,0
84DA075	41,5	50,5	68,5	87,0	96,0	105,0	123,0	141,0
84DA085	66,0	80,0	108,0	136,0	150,0	164,5	193,0	221,0
84DA100								

