

# SOLENOID VALVES

## Servo Assisted Pulse Valve



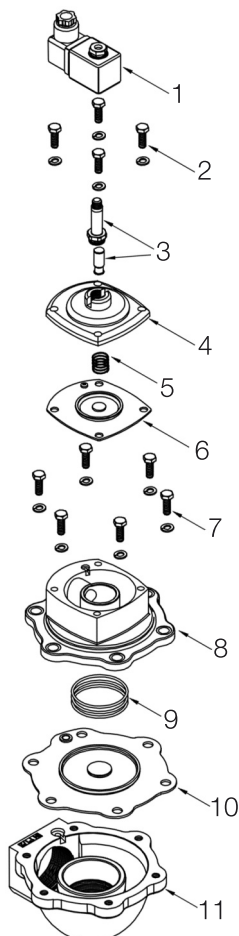
### FP55

Servo assisted pulse valve for the cleaning of dust collector filters.  
The valve is customized to be mounted on a header tank with compressed air or Nitrogen.

### Technical Specification

Media pressure:	0,5...7,5bar
Temperature range:	-20...80°C
Standard voltages:	24VDC, 24,115,230V/50-60Hz (±10%)
Power consumption:	DC-18W, AC-19VA
Protection class:	IP65 EN60529 with properly mounted connector
Connector:	PG9 E175301-803
Body:	Aluminium
Diaphragm:	Neoprene, reinforced
Pilot group:	Stainless steel

### Spare Parts



Pos	Description	Type
1	Coil with connector	BH10-...VDC / BH10-...V/50-60Hz
2	Screw and washer	VTE6x20+TROND6GROWER
3	Pilot group	GPC10
4	Cover	TCOP25
5	Spring	M25
6	Pilot diaphragm	TMOL10G
7	Screw and washer	VTE10x25+TROND10GROWER
8	Intermediate cover	TCOP65G
9	Spring	TMOL40
10	Main diaphragm	M55/LP
11	Body	TCOR55FFG

